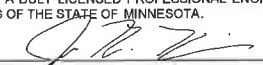


File Path: 09/27/2012
 Drawing Name: X:\Clients_Planetree\0121_MN_Trout_Liniment\0002_Cold_Spring_Brook_Troul_Habitat_Restoration\05_GMS_Project\Name.dwg\Cold Spring Brook.dwg
 Xref: Phase-0121-0002_Netp_image2_v-con-negged

NO	DATE	BY	REVISION
6			
5			
4			
3			
2			
1			

I HEREBY CERTIFY THAT THIS PLAN, SPECIFICATION, OR REPORT WAS PREPARED BY ME OR UNDER MY DIRECT SUPERVISION AND THAT I AM A DULY LICENSED PROFESSIONAL ENGINEER UNDER THE LAWS OF THE STATE OF MINNESOTA.

 JAY R. HILL
 DATE: 09/27/2012 LICENSE # 24552

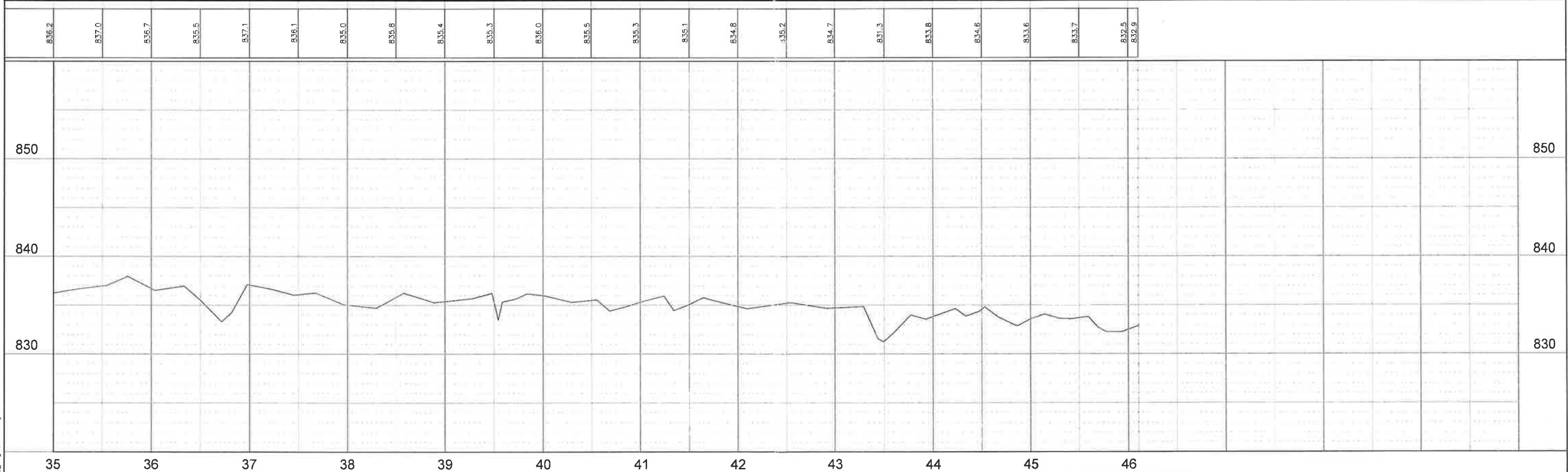
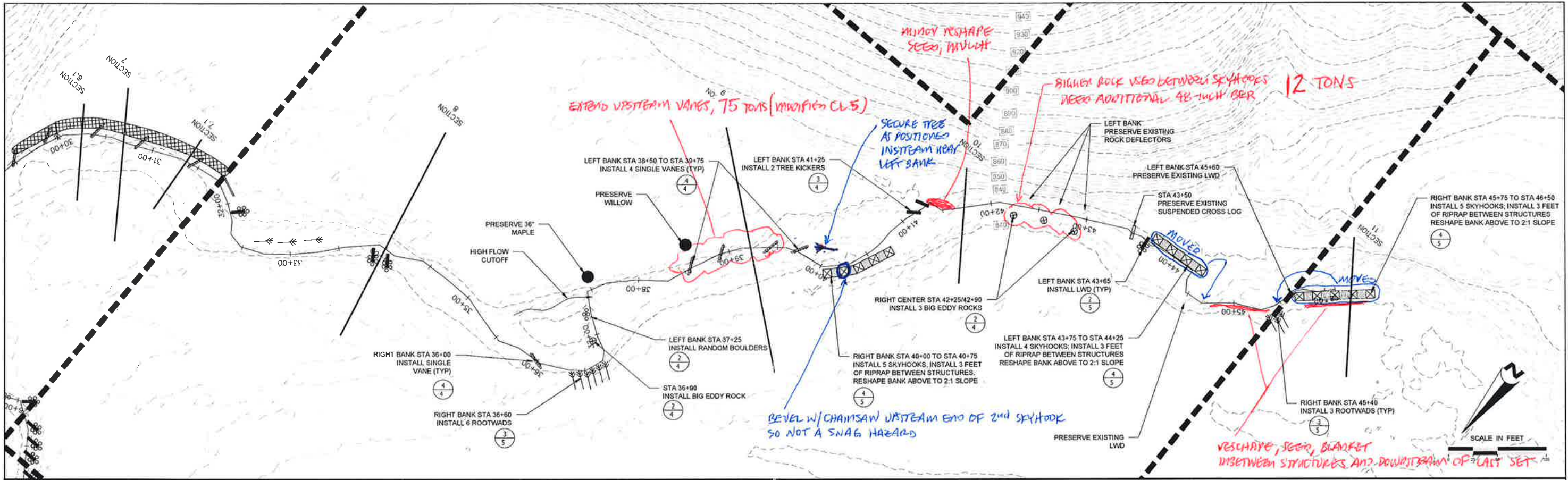
SUBMISSION DATE: 09/27/2012
 DESIGN BY: CKA DRAWN BY: JRH
 EOR PROJECT NO: 01021-0002


Emmons & Olivier Resources, Inc.
 651 Hale Avenue North
 Oakdale, MN 55128
 Tele: 651.770.8448
 www.eorinc.com

MINNESOTA TROUT UNLIMITED
 P.O. BOX 845
 CHANHASSEN, MN 55317

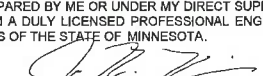
COLD SPRING BROOK TROUT HABITAT RESTORATION PROJECT
 ZUMBRO FALLS, WABASHA CO., MN
 STATE PROJECT NO. CITY PROJECT NO.

Middle Section 1
SHEET 09 OF 14 SHEETS



Plot Date: 09/20/2012
 File Path: C:\Users\jrh\Documents\Projects\Minnesota\GIS\Projects\Habitat\Cold Spring Brook.dwg
 Xref: Plans\01021-0002_Nhp_image2_schematic.dwg

6			
5			
4			
3			
2			
1			
NO	DATE	BY	REVISION

I HEREBY CERTIFY THAT THIS PLAN, SPECIFICATION, OR REPORT WAS PREPARED BY ME OR UNDER MY DIRECT SUPERVISION AND THAT I AM A DULY LICENSED PROFESSIONAL ENGINEER UNDER THE LAWS OF THE STATE OF MINNESOTA.

 JAY R. HILL
 DATE: 09/27/2012 LICENSE # 24552

SUBMISSION DATE:
 09/27/2012
 DESIGN BY: CKA
 DRAWN BY: JRH
 EOR PROJECT NO.
 01021-0002


Emmons & Olivier Resources, Inc.
 651 Hale Avenue North
 Oakdale, MN 55128
 ecology Tele: 651.770.8448
 community www.eorinc.com

MINNESOTA TROUT UNLIMITED
 P.O. BOX 845
 CHANHASSEN, MN 55317

COLD SPRING BROOK
 TROUT HABITAT RESTORATION PROJECT
 ZUMBRO FALLS, WABASHA CO., MN
 STATE PROJECT NO. CITY PROJECT NO.

Middle Section 2
 SHEET 10 OF 14 SHEETS